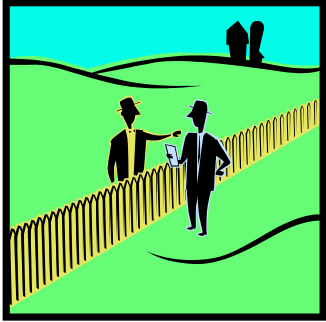


# El Tinterito



## Love Your Neighbor

- Doug Guinn, Lay Director

In preparing to write the article, I was looking for ideas as to what topic to write on. I read today's scripture reading from the Lectionary, Romans 13:8-14, and knew that I need look no further. "The commandments... are summed up in this word, 'Love your neighbor as yourself.' ...<sup>11</sup>Besides this, you know what time it is, how it is now the moment for you to wake from sleep. For salvation is nearer to us now than when we became believers; <sup>12</sup>the night is far gone, the day is near. Let us then lay aside the works of darkness and put on the armor of light;... put on the Lord Jesus Christ,....

To those of you who recently entered your 4<sup>th</sup> Day, to those who have been in your 4<sup>th</sup> Day for years and to those in between, If we but focus on the "Main Thing", which is this "Greatest Commandment", everything else is just noise. But this is easier said than done. We can only keep this commandment when we put on the armor of light, when we put on the Lord Jesus Christ. Because our neighbor includes those we don't necessarily agree with or normally associate with. Remember how Jesus led the lawyer to answer his own question about who his neighbor was, after he told the story of the Good Samaritan with the words, 'The one who showed him mercy.'

Following the discipline of the method we learn on our 3-day weekend, can help us to put on the Lord Jesus Christ and stay focused on the main thing. Piety, Study and Action...they all prepare us to make a friend, be a friend and then lead our friend to our most

intimate friend Christ. We are a friend whenever we show mercy to anyone in any kind of need.

If you are not in reunion (small) group, look for one, or start your own. If there are few or not any other folks in your congregation that have attended a 3-day weekend, invite those who have not been on a 3-day weekend to join you. Explain the format, which is quite simple and straightforward. Meet weekly or if that is not possible, on a regular basis as often as you can. Open and close with prayer. Share your piety, study, action and moment closest to Christ. You may have to explain piety, nurturing our relationship with Christ.

Before I close, I want to highlight a couple of things:

- 1) A wonderful opportunity for our community is coming up on Sunday, January 11, 2015 3-7PM at Faith Lutheran, Flower Mound, TX. It is a workshop entitled "Rediscover & Recommit", presented by Wendy Showalter, a Regional Facilitator from the National Secretariat. More details can be found in another article in this El Tinterito. Please plan to attend and put this on your calendar!
- 2) A member of our community, Paul Harrington is Dallas Chrysalis Community Steering Committee Chair and is the point of contact for upcoming Chrysalis weekends in January (Girls) and February (Boys) 2015 at Briarwood Retreat Center. Chrysalis is similar to Via de Cristo, but for high school aged youth. For more information Paul can be contacted at [elroygator@yahoo.com](mailto:elroygator@yahoo.com) or (850) 528-0928.

## New Palanca Coordinator

- Barb Guinn

I would like to introduce Shelly Brennan as the new palanca coordinator for our movement. She is a member of Faith Flower Mound, and has a ready and welcoming smile along with a servant's heart. Duties will be transitioning to Shelly for Weekend #92, November 6-9. She is putting together a small team to help with the duties of collecting and sorting gracemats, collecting general palanca, and readying the cha boxes for each weekend. She will also train the palanca chas and sit on the secretariat as an appointed member. It has been a joy to serve you over the past years, it's time to pass the torch. Welcome Shelly!

## Palanca

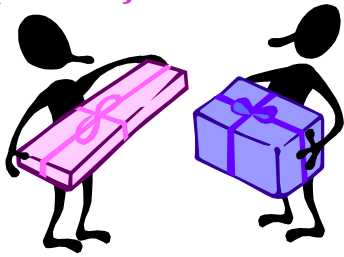


It's wonderful to see all the written palanca that comes in for a weekend!

What a blessing it is to the participants to experience God's love in this way. Just a few reminders. There are five palanca deliveries. Friday table, and bed; Saturday table and bed; and Sunday. If you would like your palanca to be delivered on a certain day, please mark a corner of the envelope with **Fri, Sat, or Sun**. If you would like it to be delivered at a certain time mark it **Fri T, Fri B, Sat T or Sat B**.

All Sunday palanca is delivered to the beds. Palanca from family members is delivered on Friday if possible. Please mark a corner of the envelope with **Fam**. One other thing that is very helpful is to alphabetize your palanca. Separate participants and staff. All palanca is sorted into a sorter. Names are listed in alphabetical order. This helps to ease the process of the first sorting the volumes of mail. Palanca should be delivered to the palanca room in the cabin to the right of the Love Team chapel in Oak Grove. Warm up your hands now for writing and prayer for Weekend #92.

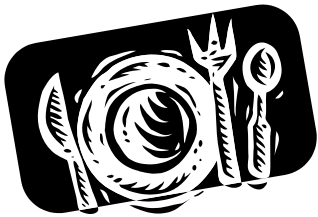
## Special Gifts and Palanca



All special gifts for a participant should be given at homecoming.

## Gracemats

Gracemats are a wonderful tool on a weekend to break the ice and build leadership. It's important to have gracemats from the different churches of the ultreyas. Participants like to hear their church name read.



You can use pictures from calendars, magazines, coloring books, etc. They can reflect the themes of the weekend, or be general. Humor is also encouraged. The gracemat I remember from my weekend was at Friday super. It was a picture of a piece of pie with ice cream and labeled, Pi-e-ty al a mode. Please limit the size to 14 x 8 1/2. This helps with the storage of extra gracemats. If you have a participant on the weekend from your church, it's great if a hug mat is made specifically for that person from your church. You know their likes and what is special. Or let the coordinator know what is special. There may be a gracemat in the file that will work perfectly. Thanks for your help. Happy coloring!

# ULTREYA

## Get Ready, Fourth Day!

Grand Ultreya! is happening soon!!

How soon? October 18, 2014,

When? 5:00 to 8:00.

Where? Faith Lutheran Church,

**FORT WORTH.**

Faith Lutheran Church, **WHERE?**

## FORT WORTH

Get out your maps, set your GPS, or test drive the neighborhood. The address for our next Grand Ultreya!

**FAITH LUTHERAN CHURCH**

**4551 Southwest Parkway,**

**Fort Worth**

It is in the Southwest corner of Fort Worth. Like every Ultreya! we love to eat, so please bring a potluck dish. Plus there is a tentative agenda:

5:00-5:30-Gathering

5:30-6:30-Potluck and small groups

6:30-7:15-Business meeting\*

7:15-8:00-Worship

**\*At the Business Meeting, we will be electing a new Training Director to replace Dori Weir after her term ends at the end of 2014. The nominee for that position is Carol Van Buskirk.**

**Along with your potluck dish, bring your Bible, Pilgrim's Guide, a happy spirit, and celebrate with us.**

## A Fourth Day Call to Action

*Please pray about actively sponsoring participants for grace weekends.*

*Registration forms should be sent to:*

*Linda Neal, Via de Cristo Registrar*

*3030 Old Mill Run*

*Grapevine, TX 76051 (deadline is October 27, 2014!)*



## Calling all local Ultreyas!

If your congregation or a group of congregations meets together for ultreya, please let me know who your leaders are. I would like to gather together as a small group during dinner. The Secretariat would like to communicate with you to brainstorm ways to help groups meet and maintain connections. What works, what has not worked. All groups have ebbs and high points, but we would like to assist in getting strong groups for ongoing encouragement. Carol Otterstad email: [carol.otterstad@gmail.com](mailto:carol.otterstad@gmail.com)

"By the grace of God.....



What a blessing is God's grace to us, and what a joy it is on our Via de Cristo Weekends to actually feel the weight of guilt and despair lifted from our hearts as we recognize that God has granted us that grace!

Our North Texas Via de Cristo community once charged a fee to Weekend registrants, but for some years now, we have waived the fee for participants so this blessing is not restricted to those with ready funds. We all believe strongly in making this opportunity a "Grace Weekend."

But did you know each Weekend costs us about \$8,000 in facility and food costs alone, of which only a little over half is covered by Staff and Love Team members' fees? Sometimes a Sponsor will donate the costs related to a participant, but often that \$155 payment is fully absorbed by our treasury. Maybe you aren't sponsoring someone for Weekend #91, but you can make a contribution (fully tax deductible) to Lutheran Via de Cristo of North Texas to aid us in our mission to personally deliver the experience of God's grace.

At Clausura, every check for \$155 which is contributed is counted as a full sponsorship. Can't afford a full scholarship? Every contribution helps to ensure that Weekends continue to be Grace Weekends for the participants, so even partial scholarships can be combine with other gifts to cover the expenses. Checks payable to "LVDCNT," or "Lutheran Via de Cristo of North Texas," or even "NTLS," can be placed in the offering at *Clausura*, or mailed at any time to Tim Talafuse, Treasurer, 702 Tartan Trail, Highland Village, TX 75077.

Is there some other way that I can contribute? Are you a member of Thrivent? Thrivent Choice, the Thrivent Financial charitable giving program, allows eligible benefit members to participate in choosing where Thrivent distributes a portion of its charitable funds. Eligibility for Choice Dollars is based on a benefit member's involvement in Thrivent Financial, their level of product ownership (life insurance, health insurance, and annuities), and volunteer leadership.

Please make your Thrivent Choice Lutheran Via De Cristo of North Texas! To assign your Choice Dollars, go online and visit [www.Thrivent.com](http://www.Thrivent.com) or call 1-800-847-4836 and say 'Thrivent Choice.' As your Choice Dollars recipient, this will help us continue our mission of providing Grace Weekends!

*Briarwood has become the new home for our Via de Cristo weekends!*

**Weekend #92: November 6 – 9, 2014**

**Weekend # 93: March 3 – 5, 2015**

**Weekend #94: August 13-16, 2015**

**Weekend #95: November 5 – 8, 2015**

*Please pray that God blesses and guides the Weekend #92 Rector, Greg Hefner, with the ability to discern the right people as he calls staff for this weekend. Pray also that those whom God has chosen would remove all obstacles that would prevent them from serving, so they can clearly hear and respond to God's invitation. Once complete, a staff list will be posted on the website, [www.ntls.org](http://www.ntls.org) and included in the next El Tintero.*

## **SERVING**

*There are many ways to serve for a weekend besides being called to a staff position. Please consider being a sponsor, praying for staff and participants, preparing palanca, setting up on Wednesday nights, participating in Saturday Serenade, going to wake-up, helping with Clausura set-up, going to Clausura, and very importantly – serving on the Love Team.*

# Remember how you felt after your Via de Cristo weekend?

The National Lutheran Secretariat Regional Coordinators have developed a new tool to be shared with every 4th Day community in the U.S. We are inviting all of the 4th Day to join us for an interactive workshop with Wendy Showalter, a Regional Facilitator from the National Secretariat. as we come together to . . .



## Rediscover & Recommit

Sunday, January 11, 2015 3-7pm  
Faith Lutheran Church  
6000 Morris Road  
Flower Mound, TX 75028

Workshop will be 4 – 4 1/2 hours in duration  
Event is FREE and open to all Cursillistas

*This is an interactive workshop designed to **Rediscover** the power and purpose of the VdC ministry + **Recommit** to the established essentials .... all for the health & well-being of each Via de Cristo secretariat.*

*The presentation is open to all Cursillistas in our secretariat – both veterans and less-seasoned servants.*

*It is a dialogue opportunity for identifying both blessings and barriers and to rekindle your entire community.*

*We have this is a time to share ideas, to support one's personal walk with Christ and to build an action plan to help strengthen our community ability to share the love of Christ with others. Life really is about the journey, and we are all in it together!*

**A meal will be cared for this event. So that we can determine how many folks to pland food for, Please RSVP Carol Otterstad by email [carol.otterstad@gmail.com](mailto:carol.otterstad@gmail.com) or by phone 469-671-8077.**

# Christ is still counting on you!